

Bitzer 2JHC-07K-40S

Specifications

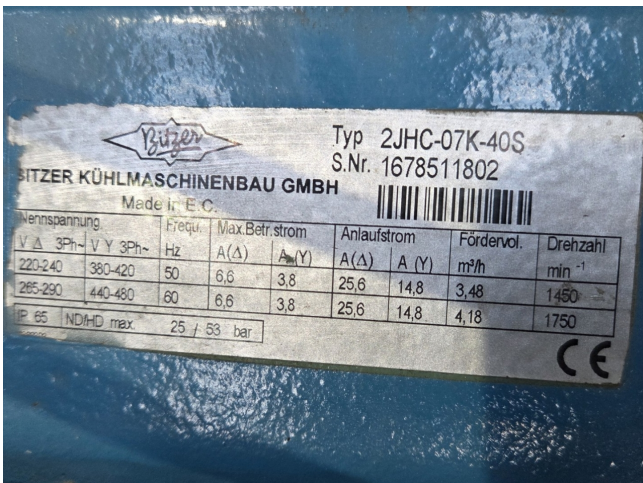
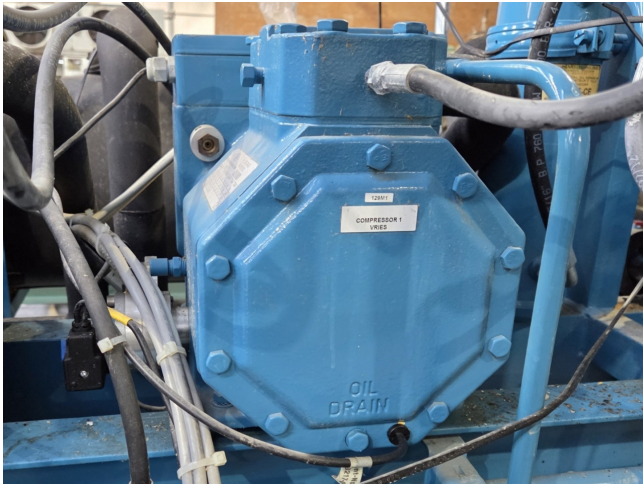
| | |
|---------------------------|--|
| Marque | Bitzer |
| Le type | 2JHC-07K-40S |
| Réfrigérant | CO2 |
| kW at -30°C/+40°C | 6,7* |
| kW at -40°C/+40°C | 4,0* |
| Système de niveau d'huile | ✓ |
| m3 / h | 3,48 m ³ /h at 50 Hz & 4,18 m ³ /h at 60 Hz |
| Remarques | *Capacity based on a condensing temperature of 0°C |
| Remarques | Y.o.b. 2010 |
| Weight | 43 |
| Tailles | 344x232x239 mm (LxWxH) |
| Stock | 2 |

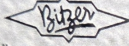


Description

Used Bitzer 2JHC-07K-40S

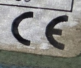
Used Bitzer 2JHC-07K-40S semi-hermetic reciprocating compressor on CO2 with an oil level regulator. The compressor has a displacement of 3,48 m³/h at 50 Hz & 4,18 m³/h at 60 Hz. *Why choose for HOSBV? We are not only the largest used refrigeration specialist in Europe, but also, we deliver all equipment solely if it has passed our extensive test. Warranty and industrial cleaning are included in your purchase. *If requested we are happy to arrange your shipment.

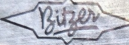



 Typ 2JHC-07K-40S
 S.Nr. 1678511800
 BITZER KÜHLMASCHINENBAU GMBH
 Made in E.C.

| Nennspannung | | Frequ. | Max. Betr. strom | | Anlaufstrom | | Fördervol. | Drehzahl |
|--------------|---------------|--------|------------------|------|-------------|------|------------|----------|
| V Δ | 3Ph~ V Y 3Ph~ | | A(Δ) | A(Y) | A(Δ) | A(Y) | | |
| 220-240 | 380-420 | 50 | 6,6 | 3,8 | 25,6 | 14,8 | 3,48 | 1450 |
| 295-290 | 440-480 | 60 | 6,6 | 3,8 | 25,6 | 14,8 | 4,18 | 1750 |

IP 65 IN/DHD max. 25 / 53 bar




 Typ 2JHC-07K-40S
 S.Nr. 1678511802
 BITZER KÜHLMASCHINENBAU GMBH
 Made in E.C.

| Nennspannung | | Frequ. | Max. Betr. strom | | Anlaufstrom | | Fördervol. | Drehzahl |
|--------------|---------------|--------|------------------|------|-------------|------|------------|----------|
| V Δ | 3Ph~ V Y 3Ph~ | | A(Δ) | A(Y) | A(Δ) | A(Y) | | |
| 220-240 | 380-420 | 50 | 6,6 | 3,8 | 25,6 | 14,8 | 3,48 | 1450 |
| 295-290 | 440-480 | 60 | 6,6 | 3,8 | 25,6 | 14,8 | 4,18 | 1750 |

IP 65 IN/DHD max. 25 / 53 bar

